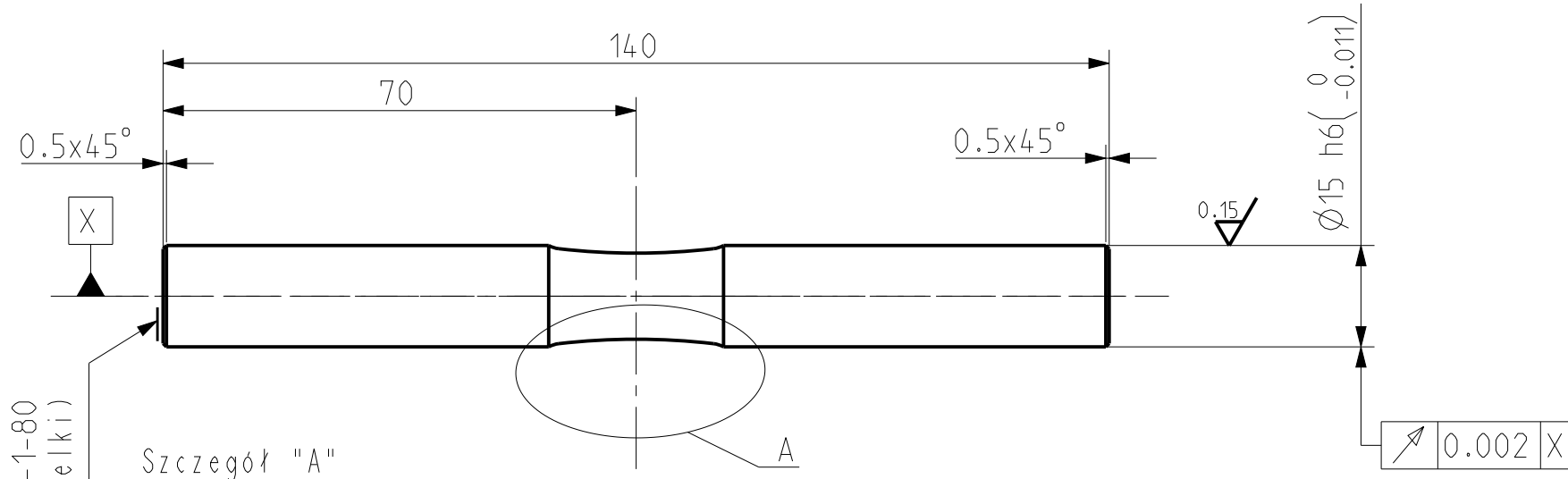
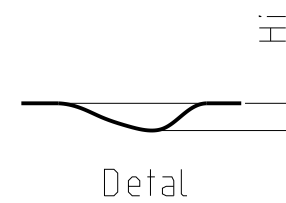
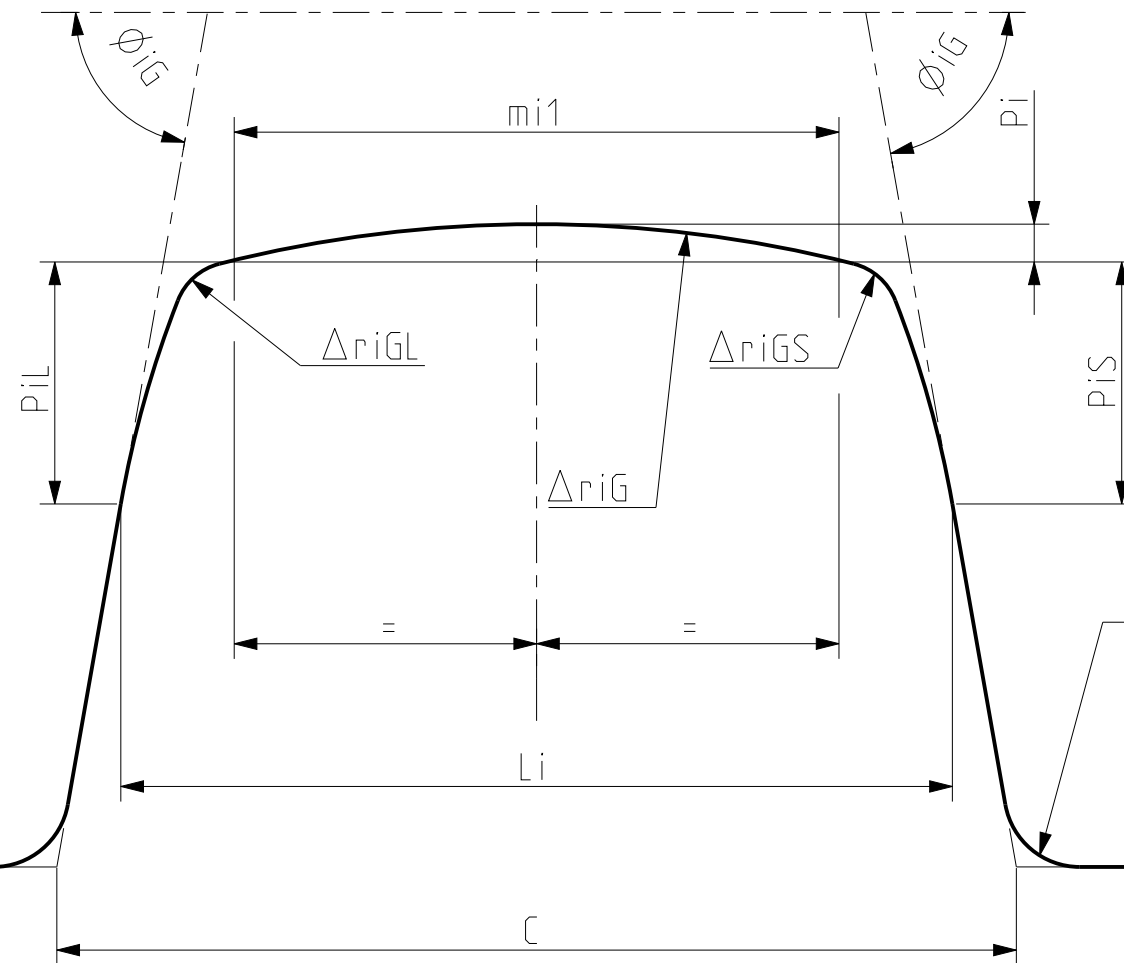


SEK-403-1-80	0.001 $\pm$ 0.003	0.036 $\pm$ 0.052	0.036 $\pm$ 0.052	0.0005	0.015	0.035	0.035	80.0°	38.900	22.620	38.950	500	5	IR-33122/PEX
Cecha	Pi	PiL	Pis	Hi	max $\pm\Delta riG$	max $\pm\Delta riGL$	max $\pm\Delta riGS$	$\phi iG$	Li	mi1	C	V V	V H	Typ pierścienia



Znakować: SEK-403-1-80  
(wg tabelki)

Szczegół "A"



Twardość: 62 $\pm$ 2 HRC  
Ostre krawędzie stępić  
Sezonować 1 raz

Material 100Cr6	Surface treatment/Obrobka pow. Hartowanie	Surface texture/Chropowatość Ra $\sqrt{0.16}$	Rev/Wydanie 1
Created by / Wykonał W.Halik	Checked by / Sprawdził A.Skorczyk	Approved by / Zatwierdził A.Skorczyk	Mass/Masa 0.185
Toleranc.acc.to/Normy ISO 8015 ISO 2768-m-K	Product name / Nazwa produktu Template shaft Wałek kopiujący	Device name / Nazwa urządzenia Precision	Main scale Skala 1:1
The reproduction, distribution and utilization of this document as well as the communication of its content to others without express authorisation is prohibited. Offenders will be held liable for the payment of damages. All rights reserved in the event of the grant of patent, utility model or design.	CAD Model No / Numer rysunku 20P_3102688_80	Product designation / Cecha SEK-403-1-80	First angle projection METRIC
			Date/Data wyd 2018-09-07
			Page 1(1) A3