

Description	Value
General information:	
Product name:	NB 100-200/181 CUBOPEOUX
Product No:	98837248
Position	
EAN number:	5712602142549
Price:	
Technical:	
Speed for pump data:	2955 rpm
Actual calculated flow:	243 m³/h
Resulting head of the pump:	37.54 m
Actual impeller diameter:	181 mm
Impeller nom:	200 mm
Primary shaft:	BQQV
Secondary shaft seal:	NONE
Shaft diameter:	32 mm
Curve tolerance:	ISO9906:2012 3B
Pump version:	AS

Materials:

Pump housing:	Stainless steel DIN W.-Nr. 1.4408 ASTM CF8M
Impeller:	Stainless steel DIN W.-Nr. 1.4408 ASTM CF8M
Material code:	N

Installation:

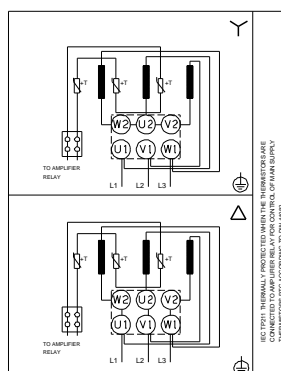
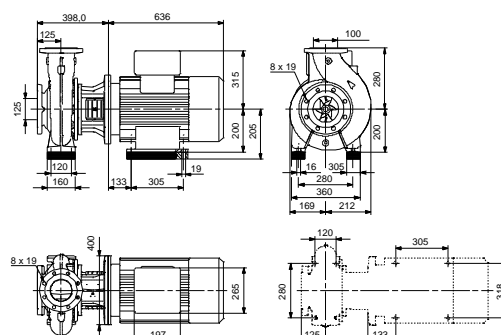
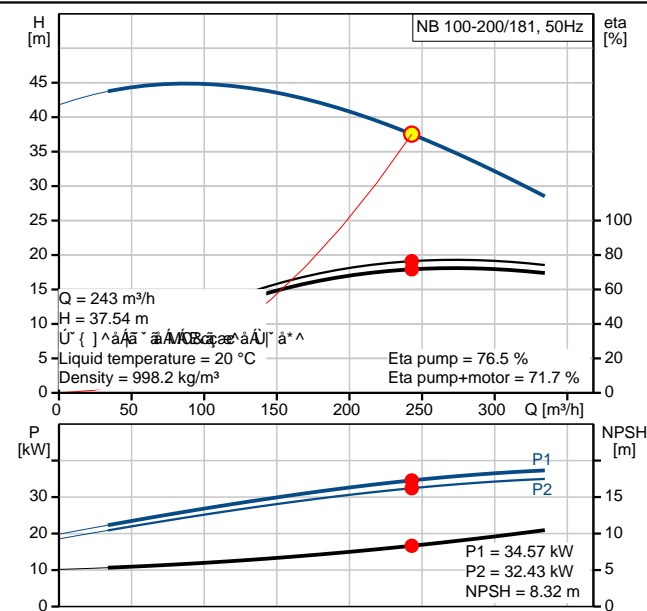
Maximum ambient temperature:	55 °C
Maximum operating pressure:	16 bar
Flange standard:	EN 1092-2
Connect code:	F2
Pump inlet:	DN 125
Pump outlet:	DN 100
Pressure stage:	PN 16
Wear ring(s):	neckring(s)

Liquid:

Pumped liquid:	Activated Sludge
Liquid temperature range:	-10 .. 90 °C
Liquid temp:	20 °C
Density:	998.2 kg/m³

Electrical data:

Motor type:	SIEMENS
IE Efficiency class:	IE3
Number of poles:	2
Rated power - P2:	37 kW
Mains frequency:	50 Hz
Rated voltage:	3 x 380-420D/660-725Y V
Rated current:	68,0-63,0/39,0-36,0 A
Starting current:	670-670 %
Cos phi - power factor:	0,87
Rated speed:	2955 rpm
Efficiency:	IE3 93,7%
Motor efficiency at full load:	93,7-93,7 %
Motor efficiency at 3/4 load:	93,9-93,9 %





Company name:

Created by:

Phone:

Date:

11/13/2015

Description	Value
Motor efficiency at 1/2 load:	93,5-93,5 %
Enclosure class (IEC 34-5)::	55 (Protect. water jets/dust)
Insulation class (IEC 85):	F
Motor protec:	PTC
Motor No:	83U15434
Mount. design. acc. IEC 34-7:	IM B35
Lubricant type:	Grease

Others:

Minimum efficiency index, MEI :	0.68
ErP status:	EuP Standalone/Prod.
Net weight:	384 kg
Gross weight:	423 kg
Shipping volume:	0.512 m ³



Company name:

Created by:

Phone:

Date:

11/13/2015